

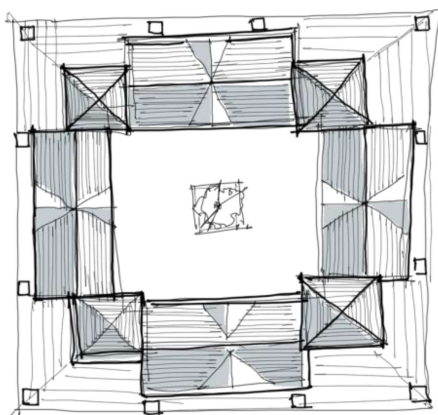
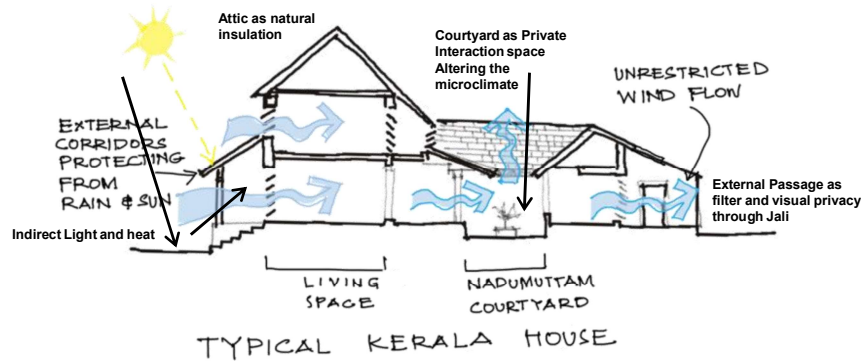
BUILDING DESIGN

Academic Department

Nallukettu

The traditional house in Kerala or 'Nallukettu' is a four sided built mass around the central courtyard. The rooms are kept around the courtyard in four directions flanked by a verandah on courtyard side and also on the external side. This was the basic inference in design of the buildings for IITPKD

Inspirations \longleftrightarrow Inferences



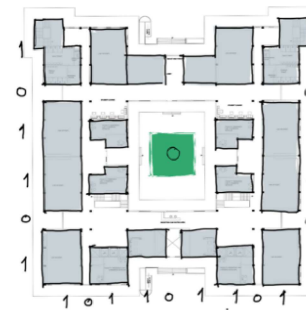
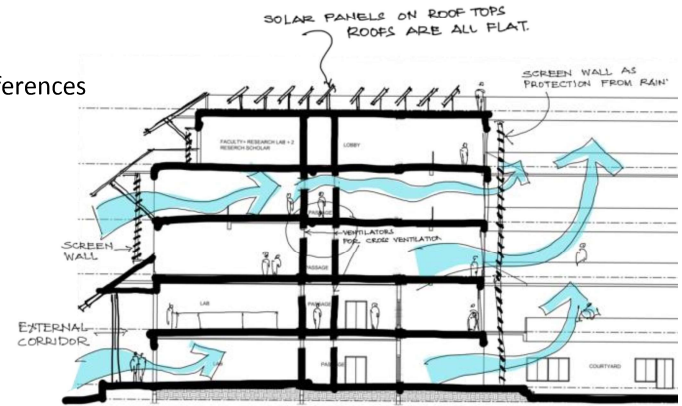
NALLUKETTU
TYPICAL PLAN

A typical Nallukettu plan, with internal and external corridor to ensure the living areas remains dry even when there is rain along with strong winds.

The central courtyard becomes first point of interaction, also alters the microclimate of the house.

The sloping roof has dormer windows to ensure uninterrupted wind flow across the house.

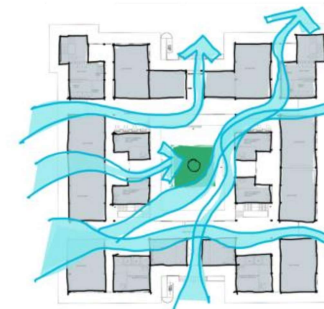
The overhangs of the roof extend much beyond the walls to shade and act as canopy against rain.



The Academic Block Prototype is designed based on SHUNYA - VOID

1 KAI - SPACE

This is a perfectly flexible grid system where the built space and open voids can be developed based on the requirement of individual blocks.



The mass and void create wind flow across the buildings.

The non-airconditioned area will be passively cooled with high ventilators and sill height windows.

The Venturi effect will increase the speed of the wind as it travels through corridors from open plazas